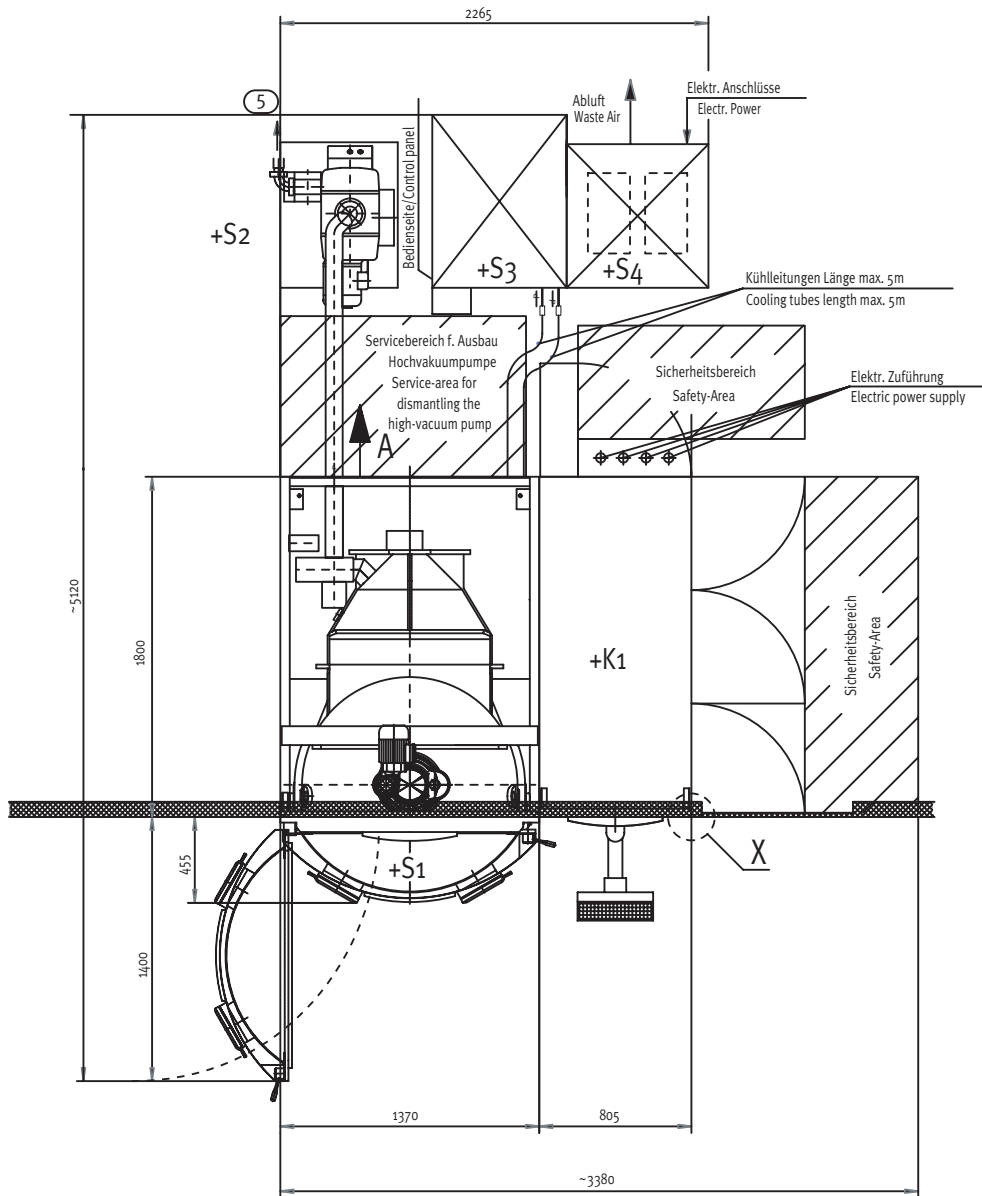


Optimum performance and high process repeatability

A large loading capacity, a high-speed process and a superior production output combined into a flexible concept: SYRUSpro 910 is a medium-sized system for the production of optical coatings. Its chamber diameter is about 920 millimeters. Just like the other members of the system family it works with optical thickness monitoring (OMS) as well as with physical control by quartz crystal thickness monitoring.

OPTICS



Technical Features SYRUSpro 910



LEYBOLD OPTICS

SYRUSpro 910 – Optimum performance and high process repeatability

Technical Data

Process Chamber

Inside diameter 920 mm

Process Control

Automatic process control system

SYproCS

Auxiliary SPS for external I/O

integration of RGA, etc. option

Pump Set

Pre-vacuum pump

Roots pump set

High vacuum pump

Diffusion pump

optional cryopump

Meissner trap

Polycold PFC

optional LN2 baffle

Pump down time (to 1×10^{-5} mbar)

approx. < 6 min* / 11 min* clean chamber / process conditions

Substrate Carrier

Calotte diameter

800 mm

Capacity (typical):

Substrate dia. 65 mm

80 pcs.

Substrate dia. 70 mm

68 pcs.

Substrate dia. 75 mm

60 pcs.

Planetary carrier (regular size)

4 x Ø up to 390 mm

option

Capacity (typical):

Substrate dia. 60 mm

4 x 25 pcs.

depending on substrate- / carrier sizes

Substrate Treatment

Substrate Heating

up to 300 °C

higher temperature on request

Back side heater

11 kW

for calotte

Front side heater

up to 15,6 kW

option

PIAD Source

Plasma source

APS

option

PVD Sources

Electron beam evap. HPE 6

up to 10 kW

depending on crucible type

Electron beam evap. HPE 10

up to 10 kW

option

Thermal evaporator

4 kW

option

Other sources (e.g. PECVD)

on request

option

Layer Monitoring

Physical monitoring

Quartz crystal thickness monitoring

XMS / six-fold sensor

up to five different channels

Optical monitoring

Optical thickness monitoring

OMS 5000 UV-VIS-NIR reflection

option

transmission optional

Site Requirements

Water

Consumption

hot / cold

Pressure

70 l/min @ 20 °C

minimum

Compressed air

4.5 bar

minimum

Electrical connection

7 to 9 bar

102 to 129 psi

Voltage

3 x 400 V

± 10 %

Frequency

50 / 60 Hz

Power

80 kW

minimum

Required floor space (approx.)

16.4 m²

incl. safety-, service- and operation area

Floor load/weight (approx.)

3,600 kg

* pump set with roots pump set, diffusion pump and Meissner trap

All details are subject to technical changes.

LEYBOLD OPTICS GmbH
Siemensstrasse 88
63755 Alzenau, Germany
Phone: +49 6023 500 - 0
Fax: +49 6023 500 - 150
e-mail: info@leyboldoptics.com
www.leyboldoptics.com



LEYBOLD OPTICS